

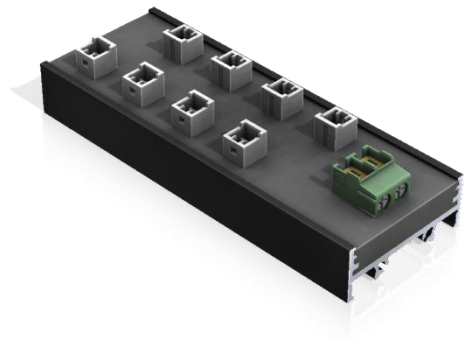
Datasheet // FlexLite & LineLite

SignFuse

Our SignTerminal is a fused 8 channel interface, which is placed between the power supply and the sign. It enables a reliable, safe, easy and fast connection.

Key Features

- Designed as an electronic fast acting fused distribution box to protect against fire hazards
- Rated for 800* (8x 100) Quantum modules (or its electrical equivalent)
- 24 ~ 48 V
- Short or overload detection: < 1 μ s
- Auto-Retry cycle time: 2 s
- Defaults to power off state
- 1x PCB terminal block for power input for cables up to 2.5mm² or 14 AWG
- 8x interface for dedicated Stogger power cable
- Mates with Molex 502578-0200 connector



Limburg
+CO₂ innovaward



Winner 2017
International Lighting
Design Prize

Alufoil Trophy 2018
Winner



Technical specifications

Detection method High side current sense resistor	
Input	1x 24 ~ 48V @ 16A (up to 2.5mm ² or 14 AWG)
Output	8x 24 ~ 48V @ 2A
Overload detection	< 1 μ s
Auto-Retry cycle time	2 s
Size (L x W x H)	76 x 25 x 13,5 mm
Detection method	High side current sense resistor
Protection method	High side P-channel MOSFET
Control	None
Safety	Integrated automatic fuses
Connect up to 800 LED modules*	Exact amount depends on application

Remark

A custom setup is possible: single-shot, auto-retry cycle times and PWM preset.